

Types of Maps and Map Features

Different types of maps provide different kinds of information about places that we study.

Types of Maps

Political Map: a map that shows political borders, such as countries or provinces. They also include names of important towns, cities, and bodies of water.

Thematic Map: a map that shows information for a specific purpose. They could show regions of natural vegetation, population distribution, temperature and precipitation patterns, levels of pollution, etc.

Topographic Map: a map that shows the elevation of land and natural features such as lakes, rivers, and mountains. On flat maps, elevation is shown with lines. On 3-D maps, elevation can be shown as a raised surface.

Historical Map: a type of thematic map that illustrates how things were in the past. They can show changes in borders, transportation networks, or the extent and type of agricultural activity.

General Purpose Map: a map that contains many different types of information. Particularly used on travel maps, or road maps that are used for directions while driving.

Basic Features of a Map

Whenever a map is made, certain features should always be included. The features help the reader understand the purpose of the map.

Title: Identifies area shown and topic, purpose or focus

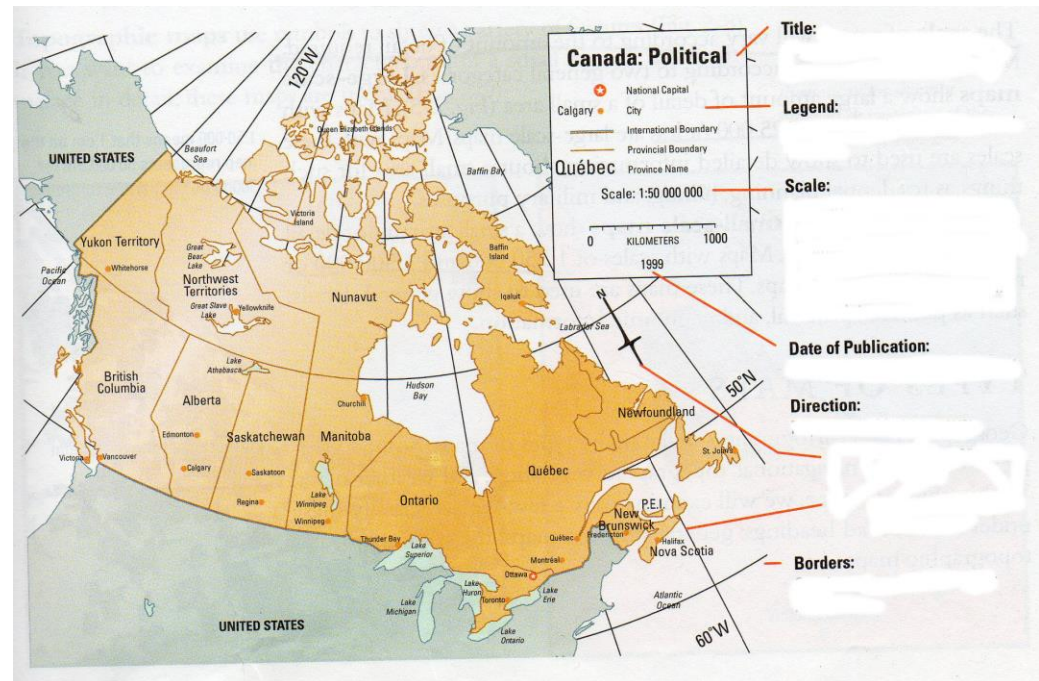
Legend: Explains the meaning of symbols and colors

Scale: Compares distances on the map with the actual distances on the earth's surface.

Date of Publication: Indicates if the information is recent.

Direction: Usually indicated by a direction arrow

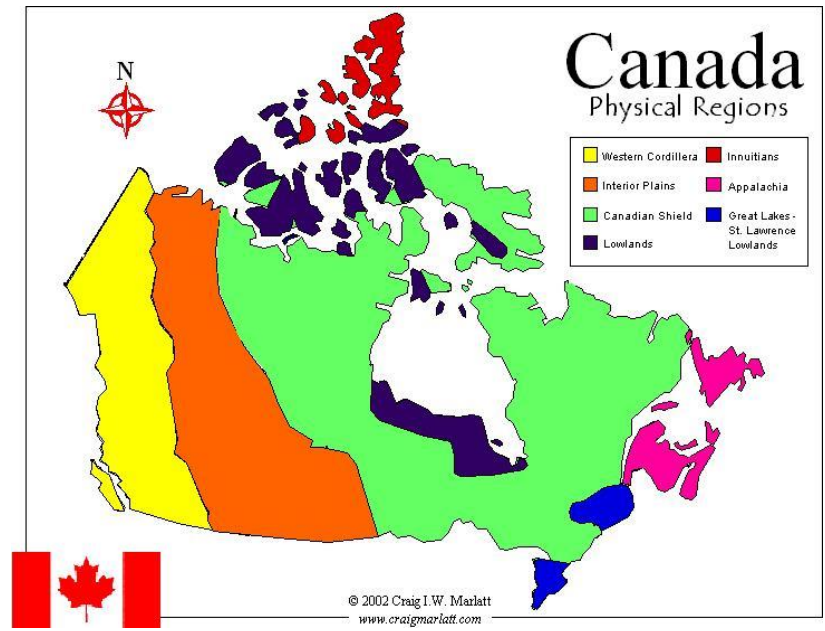
Borders: Set the map apart from other information



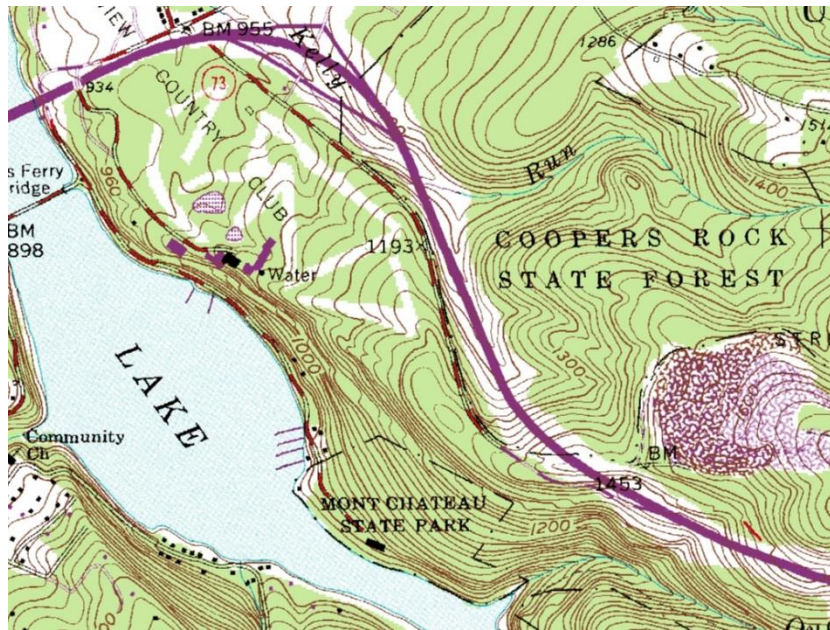
Political Map



Thematic Map



Topographic Map



General Purpose Map

